



8 Woodside

Buxton, SK17 6PW

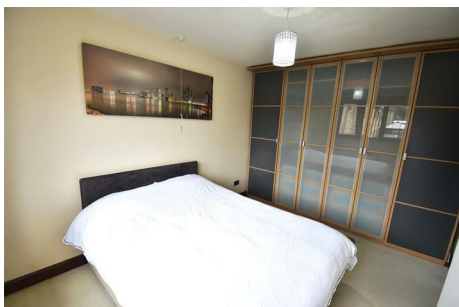
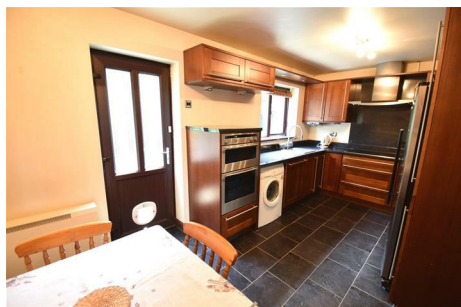
£230,000



8 Woodside

Buxton, SK17 6PW

£230,000



A superbly presented three bedroom end mews house benefitting from uPVC sealed unit double glazing throughout. With electric heating and excellent quality fittings to the kitchen and bathroom. With gardens to front and rear and two off road allocated parking spaces. Popular cul de sac location. Viewing is highly recommended.

DIRECTIONS:

From our Buxton office turn left and proceed into Terrace Road and turn left into Hardwick Mount. Bear right and follow the road as it becomes Hardwick Square East. At the junction, turn left into Silverlands and continue along this road for a short while, turning right into Woodside. Bear left and the property is located on the left where our For Sale board has been erected.

GROUND FLOOR

Entrance Porch

With wood effect laminate flooring and door to lounge.

Cloakroom

With low level suite wc, vanity wash hand basin and stainless steel heated towel rail. With frosted uPVC sealed unit double glazed window

Lounge

16'8" narrowing to 9' x 13'6" (5.08m narrowing to 2.74m x 4.11m)

With a stone effect electric fire and fire surround, two electric night storage heaters and stairs to first floor with under stairs storage cupboard. With wood effect laminate flooring throughout and uPVC sealed unit double glazed window to front.

Dining Kitchen

16'4" x 8'10" (4.98m x 2.69m)

Fitted with an excellent quality range of base and eye level units and working surfaces incorporating a stainless steel sink unit with splashbacks. With a built in stainless steel Neff oven, five ring induction hob and extractor over. With integrated Neff microwave oven, integrated dishwasher, space for an American style fridge/freezer and space and plumbing for a washing machine. Electric night storage heater, uPVC sealed unit double glazed window to rear and uPVC door to outside.

FIRST FLOOR

Landing

With loft access and uPVC sealed unit double glazed window to side.

Bedroom One

11'5" x 8'9" (3.48m x 2.67m)

Electric night storage heater, uPVC sealed unit double glazed window to front and a range of floor to ceiling built in wardrobes and cupboards.

Bedroom Two

12'1" x 8'10" (3.68m x 2.69m)

With uPVC sealed unit double glazed window and wall mounted electric heater.

Bedroom Three

7'7" x 7'2" (2.31m x 2.18m)

With wood effect laminate flooring, electric night storage heater plus a further wall mounted electric heater.

Bathroom

Part tiled and fitted with an excellent quality suite comprising of panel bath with shower over and shower screen, low level suite wc and vanity wash hand basin. With frosted uPVC sealed unit double glazed window and stainless steel heated towel rail.

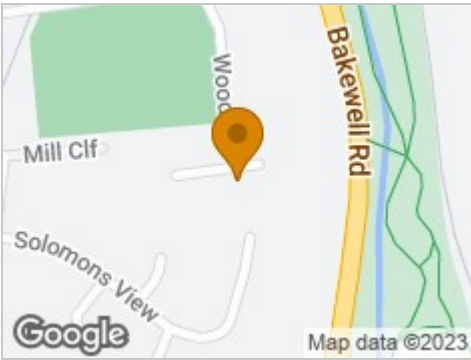
OUTSIDE

Garden and Parking

To the front of the property there are two allocated off road parking spaces with flagged pathways and lawned areas to the front, side and rear. There is a good size flagged patio to the rear.



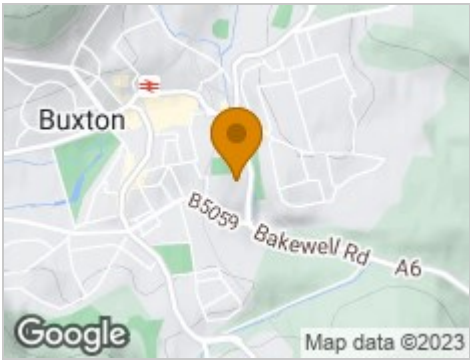
Road Map



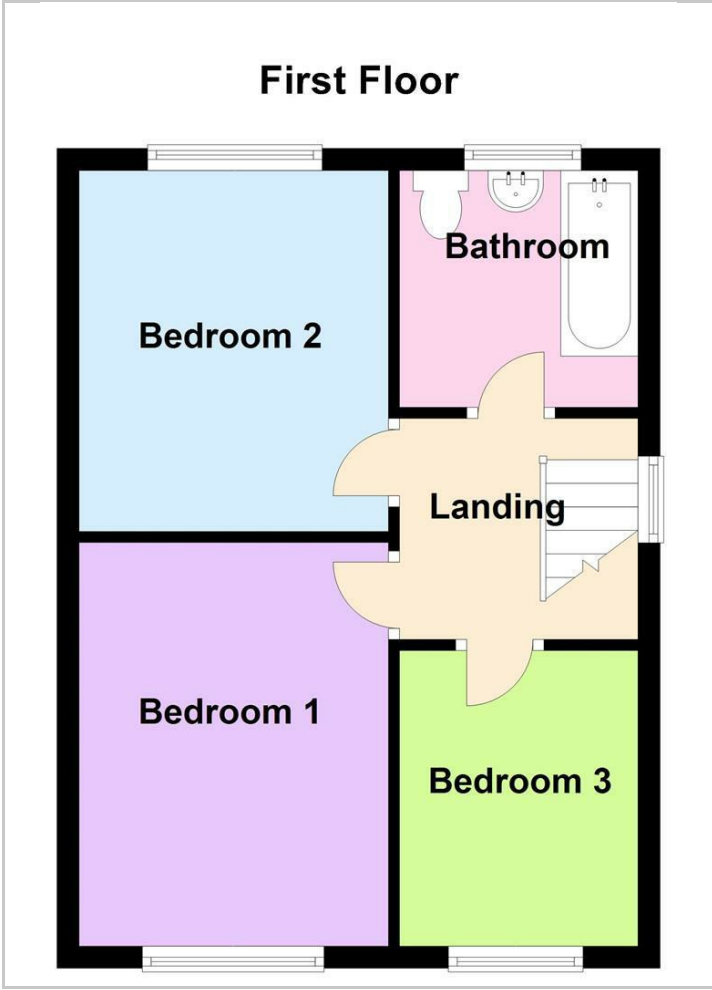
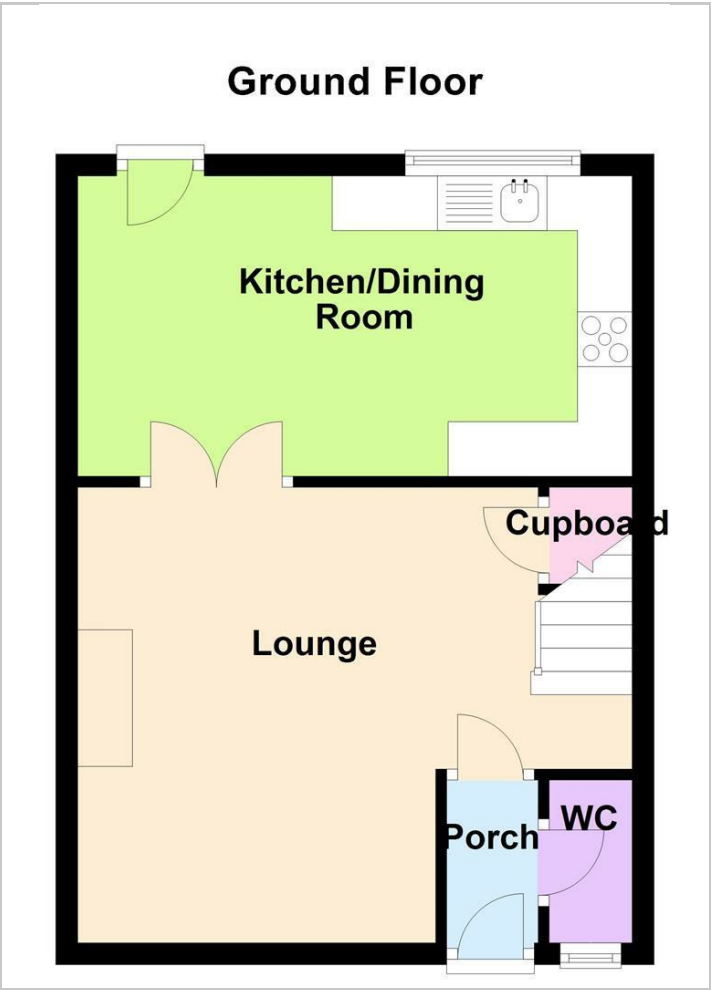
Hybrid Map



Terrain Map



Floor Plans



Viewing

Please contact our Jon Mellor & Company Office on 01298 24383 if you wish to arrange a viewing appointment for this property or require further information.

Important Notice
Jon Mellor & Company, their solicitors and joint agents give notice that:
1. They are not authorised to make or give any representations or warranties in relation to the property either here or elsewhere, either on their own behalf or on behalf of their client or otherwise. They assume no responsibility for any statement that may be made in these particulars. These particulars do not form part of any offer or contract and must not be relied upon as statements or representation of fact.
2. Any areas, measurements or distances are approximate. The text, photographs and plans are for guidance only and are not necessarily comprehensive. It should not be assumed that the property has all necessary planning building regulation or other consents and Jon Mellor & Company have not tested any services, equipment or facilities. Purchasers must satisfy themselves by inspection or otherwise.

1 Grove Parade, Buxton, Derbyshire, SK17 6AJ
Tel: 01298 24383 Email: info@jonmellor.co.uk <https://www.jonmellor.co.uk>

Energy Efficiency Graph

